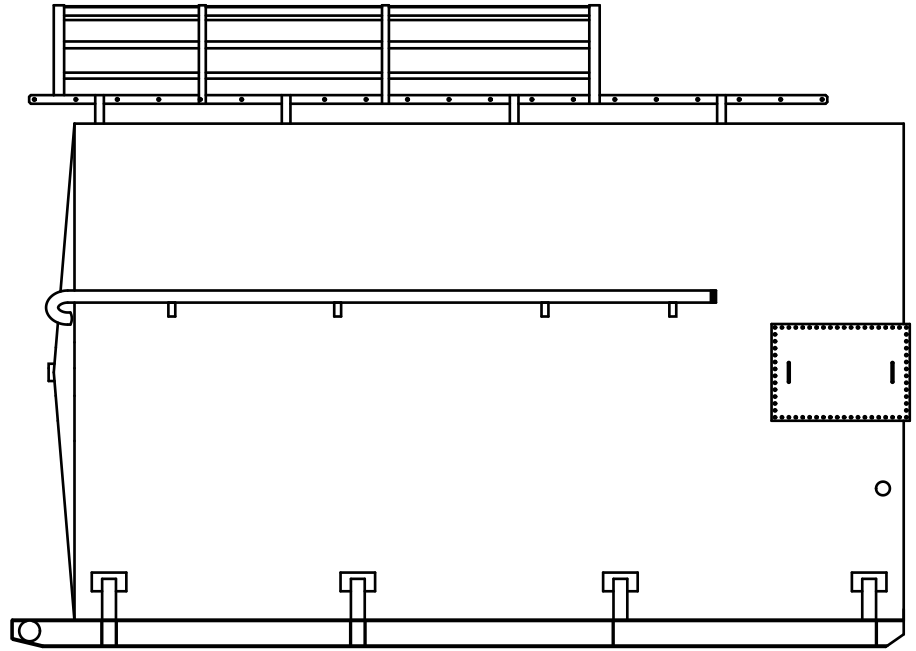
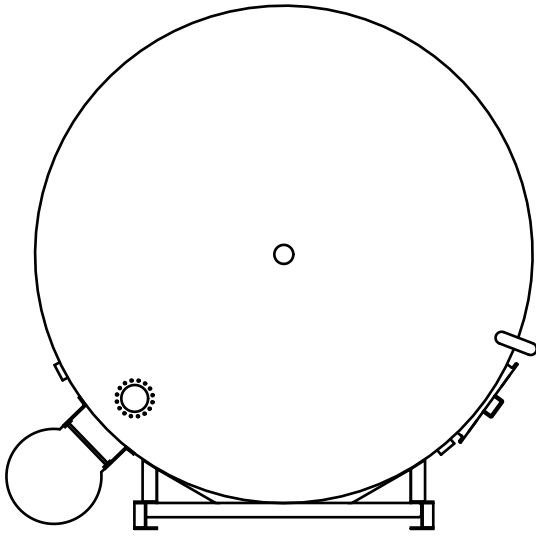


API 12F SKIDED FRAC TANKS



GENERAL NOTES

1. Tanks are fabricated to the latest edition of The American Petroleum Institutes API 12F specifications.
2. API 12F tanks fabricated by Empire Steel Manufacturing Company are shop fabricated, cylindrical, welded steel in various sizes and capacities for internal pressures no to exceed atmospheric. These tanks are used by the oil production industry for storage of crude oil, water and other liquids commonly used by this industry.

GENERAL SPECIFICATIONS

1. 400 BBL capacity is standard. Other capacities available upon request.
2. Plate steel is ASTM A36 mild carbon steel.
3. Joints are double welded butt construction.
4. Tops and bottoms are flanged.
5. All welding is per ASME Section IX.
6. Thief hatch is 8" diameter, 16oz pressure and 1/2oz vacuum psi.
7. Cleanout is 24" X 36" and can either be a single or double door.
8. Skids are W8X24 with the lower 6'-0" of skid plate reinforced. Cross beams are W4X13. Tow bar is 4"Ø SCH 80 pipe.
9. Ladders are available upon request.
10. Overflow, fill line, and roof or shell manways are available upon request.
11. Exterior surfaces are power tool cleaned and painted desert tan. Exterior sandblasting and other coatings are available upon request.
12. Interior surfaces are bare steel. Interior sandblasting and other coatings are available upon request.