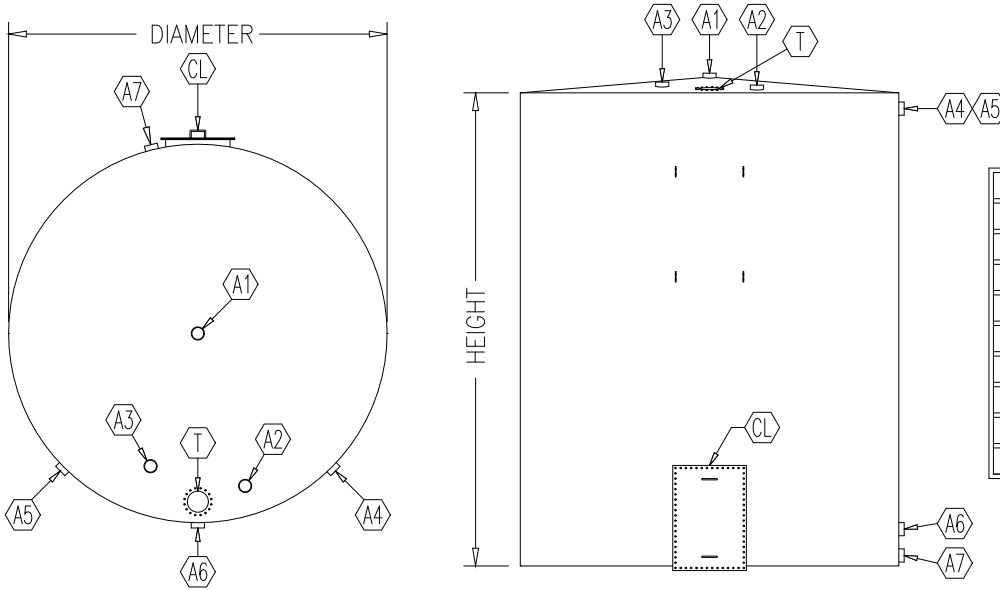


API 12F OILFIELD WELDED STEEL PRODUCTION TANKS



MARK NO.	SIZE	DESCRIPTION
CL	24"x36"	CLEANOUT
A1	4"	SPARE
A2	4"	FILL LINE
A3	4"	ATMOSPHERIC VENT
A4	4"	OVERFLOW LINE
A5	4"	OVERFLOW LINE
A6	4"	PIPE LINE
A7	4"	DRAIN LINE
T	8"	THIEF HATCH

NOMINAL CAPACITY	NOMINAL DIAMETER	NOMINAL HEIGHT	NOMINAL WEIGHT
200 BBL	12'-0"	10'-0"	5,106#
300 BBL	12'-0"	15'-0"	6,587#
400 BBL	12'-0"	20'-0"	8,182#
500 BBL	12'-0"	25'-0"	8,783#
500 BBL	13'-6"	20'-0"	9,281#
500 BBL	15'-6"	16'-0"	12,290#
750 BBL	15'-6"	24'-0"	13,088#

GENERAL NOTES

1. Tanks are fabricated to the latest edition of The American Petroleum Institutes API 12F specifications.
2. API 12F tanks fabricated by Empire Steel Manufacturing Company are shop fabricated, vertical, cylindrical, aboveground, closed top, welded steel, with a conical top and either flat bottom or the type A unskirted or type B skirted cone bottoms and are intended for internal pressured not to exceed atmospheric. These tanks are used by the oil production industry for storage of crude oil, water and other liquids commonly used by this industry.

GENERAL SPECIFICATIONS

1. Plate steel is ASTM A36 mild carbon steel.
2. Joints are double welded butt construction.
3. Tops and bottoms are flanged.
4. All welding is per ASME Section IX.
5. All connections are 4" diameter female NPT.
6. Thief hatch is 8" diameter.
7. Cleanout can either be a single or double door.
8. Walkway lugs (4) are included.
9. Lifting lugs are included to handle tanks either vertically or horizontally.
10. Exterior surfaces are power tool cleaned and painted desert tan. Exterior sandblasting and other coatings are available upon request.
11. Interior surfaces are bare steel. Interior sandblasting and other coatings are available upon request.

WWW.EMPIRESTEEL.COM

PHONE: (406) 252-0101 FAX: (406) 252-9922

E-MAIL: billb@empiresteel.com